

**A life replete with
space, greenery, and peace**
at abodes that are deservingly distinct.

mahindra Aqualily
at
mahindra World City



Mahindra Aqualily is registered as "Aqualily phase 2C2" under TNRERA No: TN/01/Building/0174/2022 dated 20.05.2022 valid up to 31.12.2024 and the details are available at www.rera.tn.gov.in.

This Project is being developed by Mahindra World City Developers Limited in phases. This communication is purely conceptual and for representational purposes only. Any furniture, fixtures and white goods shown are not part of the offering and purely for showcasing possibilities. Distance and timelines (shortest) are indicative and approximate subject to road and infrastructure facilities provided by the appropriate authorities. All figures mentioned herein are based on the estimated calculations. The mentioned price does not include stamp duty and registration fee. Terms and Conditions apply.

Stock image for representational purposes only

When you have set yourself apart and secured a unique place for yourself you deserve a home that redefines premium living, amidst a low-density community.

Discover homes that are a symbol of your achievements and success. Live with a like-minded community, and explore the convenience of a wide range of ready-to-use amenities.

Experience homes that resonate with space and luxury.

**Welcome to Mahindra Aqualily,
premium homes that offer an exclusive lifestyle,
with spaces that are deservingly distinct.**

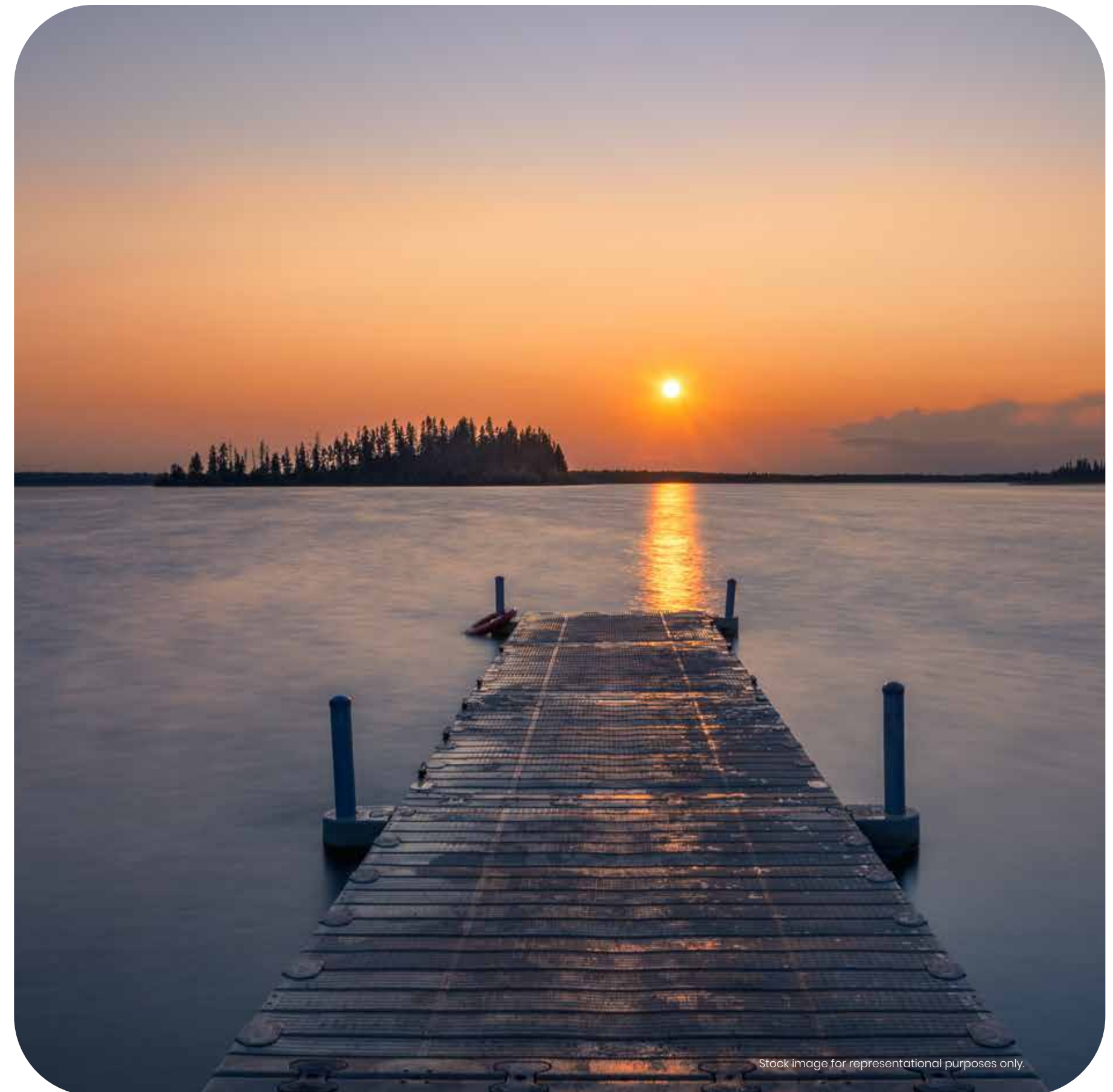


The quintessence of panache and tranquillity

Mahindra Aquality at Mahindra World City, Chengalpattu, offers large-sized premium homes overlooking a serene lake*, with an array of ready-to-use lifestyle amenities. The area is filled with abundant open spaces and lush greenery that will help rejuvenate yourself. The impeccably designed homes also provide wide roads and a secured community where you can live in the company of like-minded people.

Engage yourself in activities that alleviate your senses with numerous facilities that are yours for the asking. Spend your precious time with loved ones, doing things that delight you the most, in a residence that you deserve.

* Selected units only



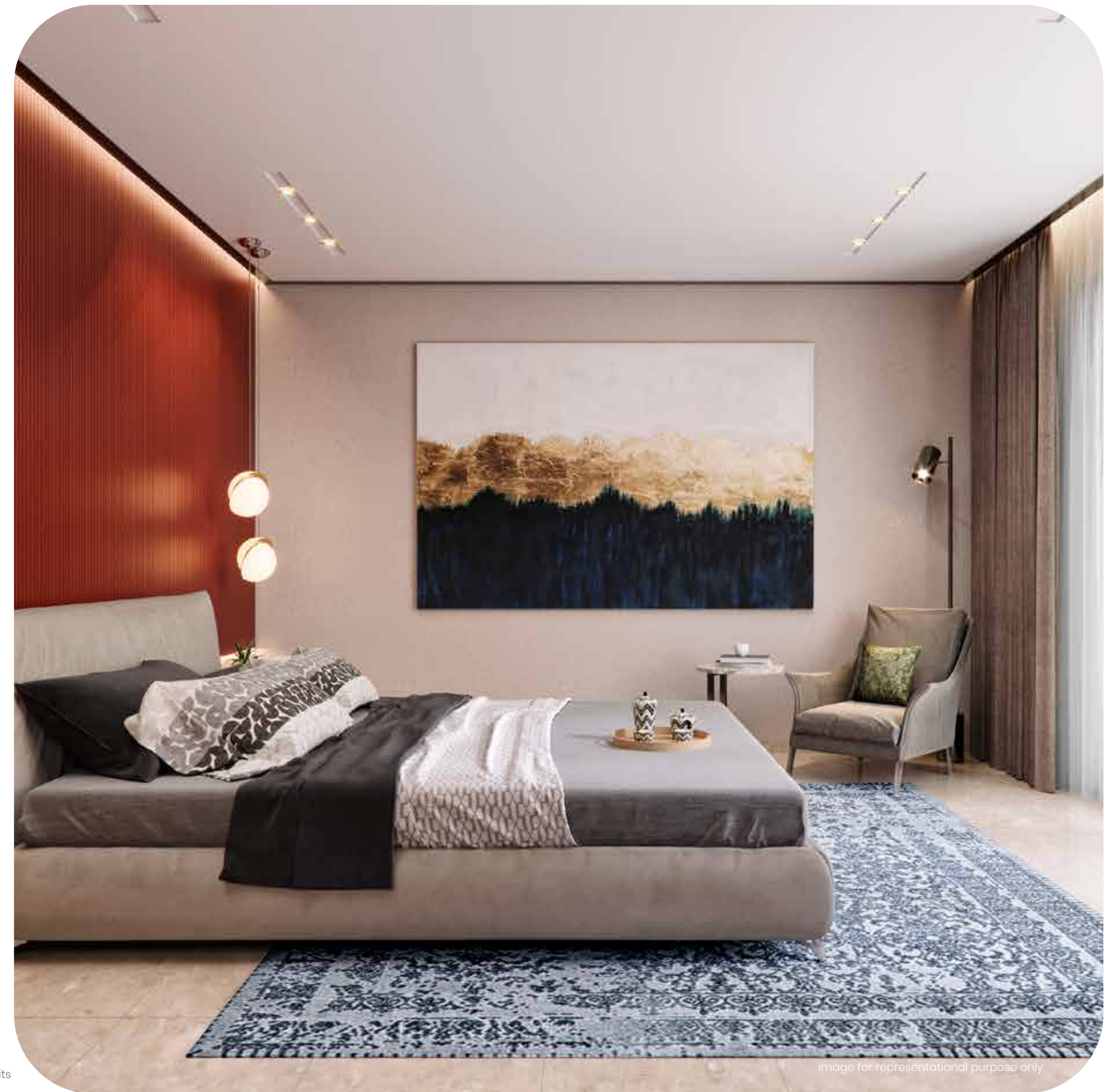
Stock image for representational purposes only.

- Multi-storeyed towers with efficiently designed 3, 3.5 BHK & 4 BHK Duplex apartments
- IGBC pre-certified Gold rated Green homes
- Thoughtfully designed towers ensure privacy and natural light
- French windows at balconies allow maximum light and better ventilation
- Private terrace & balconies offer breath-taking views
- A two acre central park with shaded walkway and seating area
- A stunning clubhouse of 16,000 sq. ft with a swimming pool, gymnasium, indoor games room yoga /aerobics room, and a multipurpose hall



The benefits of going out, with the comfort of staying in

Experience a home that is not just spacious, but designed to maximise air circulation and cross ventilation, giving you an authentic indoor-outdoor living experience. With vitrified flooring and large L-shaped* balconies enjoy the feeling of being in nature, from the privacy of your own home.

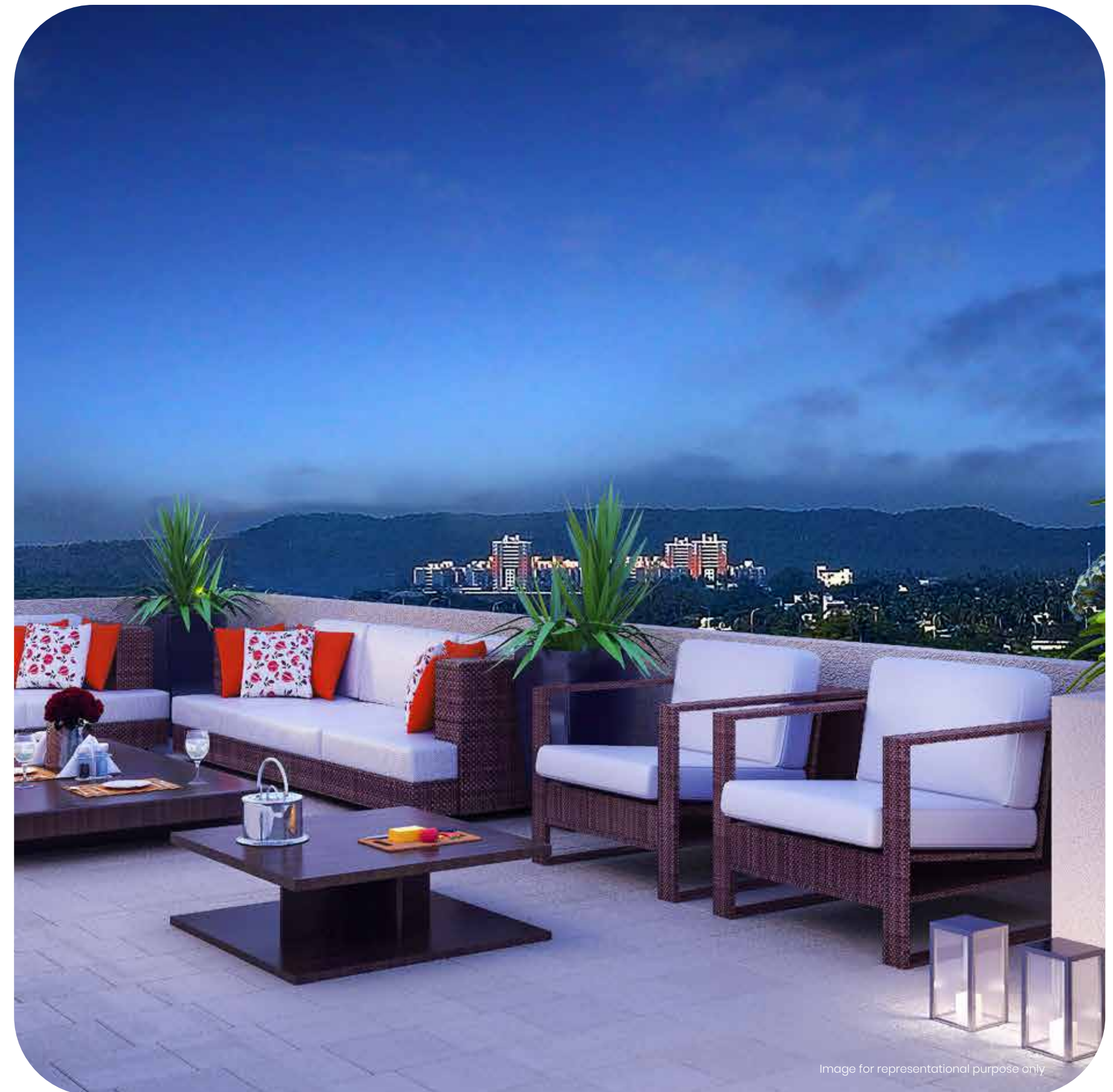


* In specific units

Image for representational purpose only

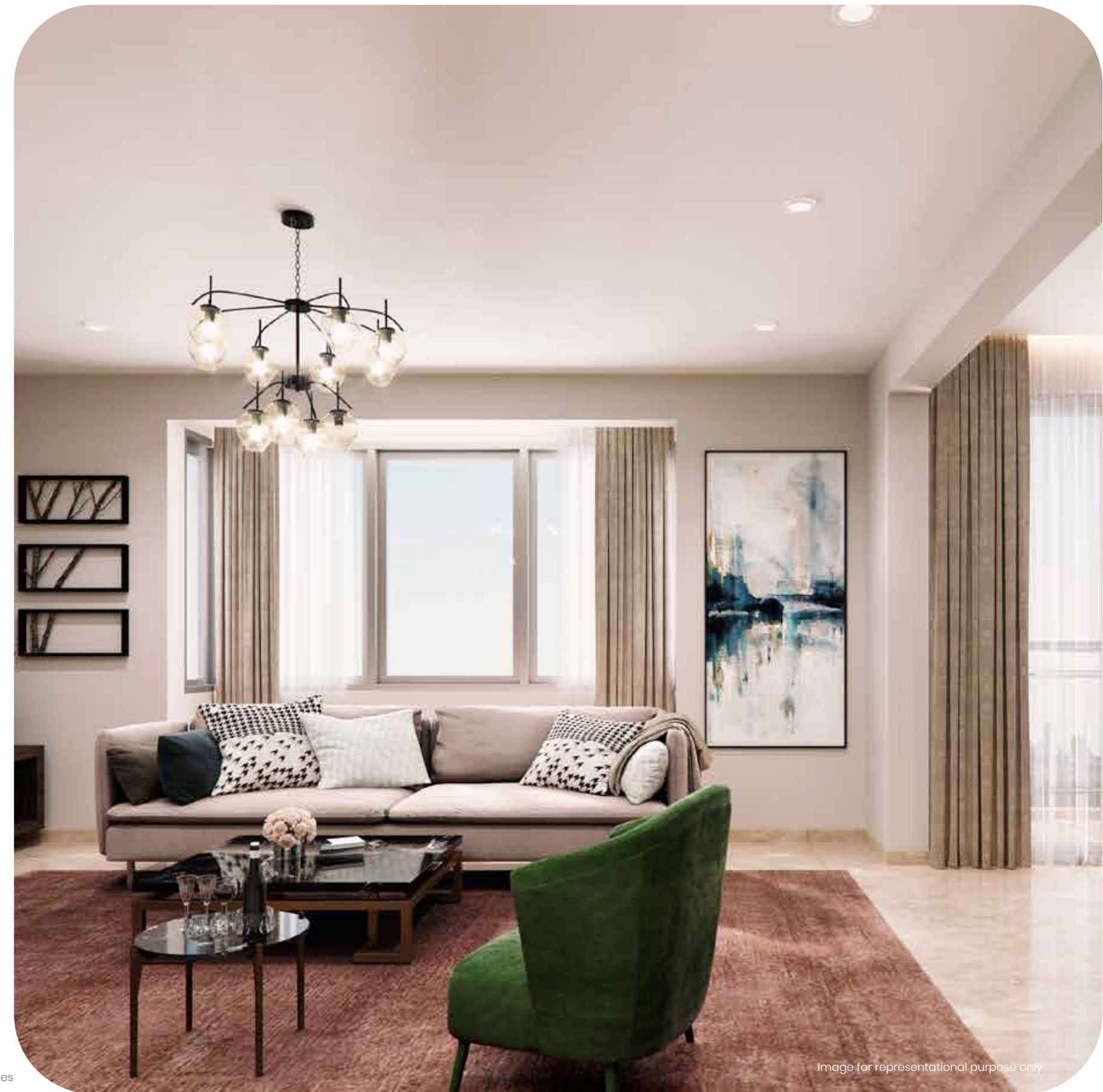
A venue for any celebration, with a view that matches

Whether you want to enjoy the lake and hill view or host a party for your family and friends, the private terrace area is the perfect place for you. The duplex unit at two levels is connected with a staircase that has a granite finish and a stainless steel railing. Now, you can enjoy your celebrations while overlooking the panoramic views.



Come home to a breath of fresh air, all day

Enter the living or dining area in a home bordered by full height french windows, beyond which lies your balcony. Or, relax at the exclusive bay window in the living area, before you retire to the additional study room.*



*in 3.5 BHK homes

Image for representational purpose only

Refresh and recharge as you catch up with your loved ones

At Mahindra Aqualily, you get to choose from a host of external amenities that help you connect with yourself as well as your friends and family.



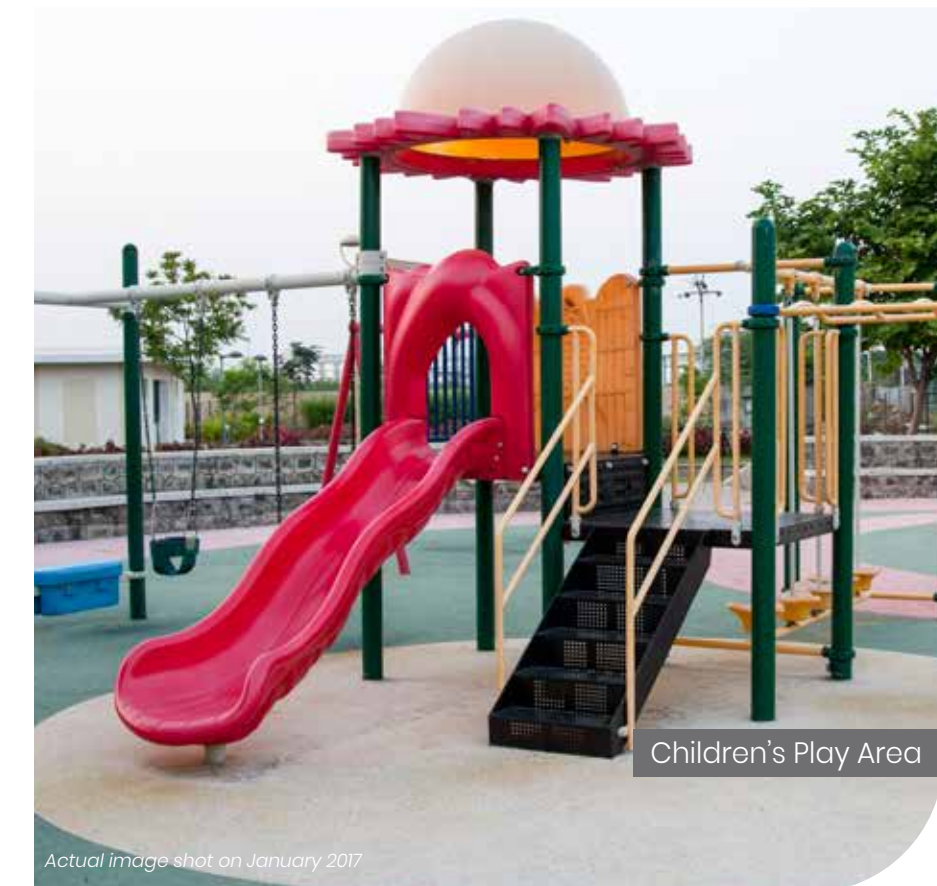
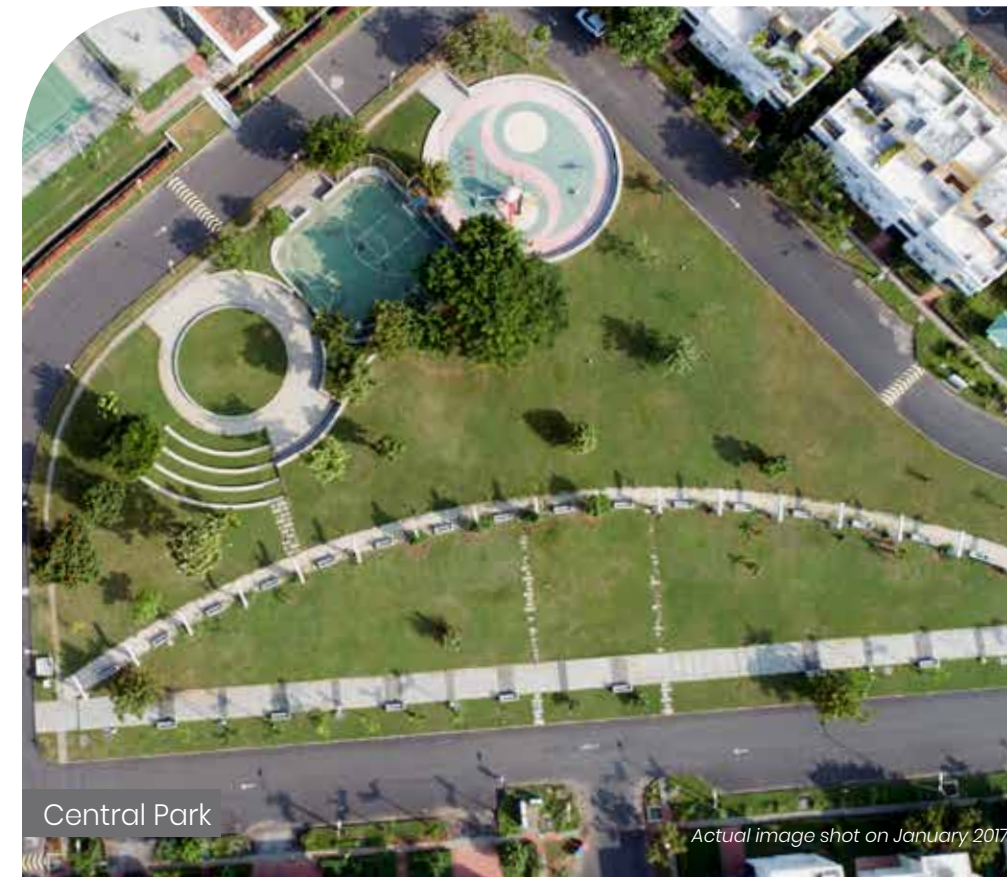
Fitness and fun, all under one roof

Whether you want to take your kids for some fun time, or you want to achieve your fitness goals, the clubhouse at Codename AquaVista has got everything you need. Step out of your house to a variety of amenities that will help engage you productively.



Take a break to revive your spirit as you relish the nature

Spend your leisure time exploring the array of amenities that will enliven your senses. At Mahindra Aqualily, you get to discover yourself by taking a walk through the garden or accompany your kids while you watch them play.



Explore facilities that safeguard you and your home

Mahindra Aqualily offers provisions that guarantee your protection as well as the safety of your home. These homes have building and security features like:



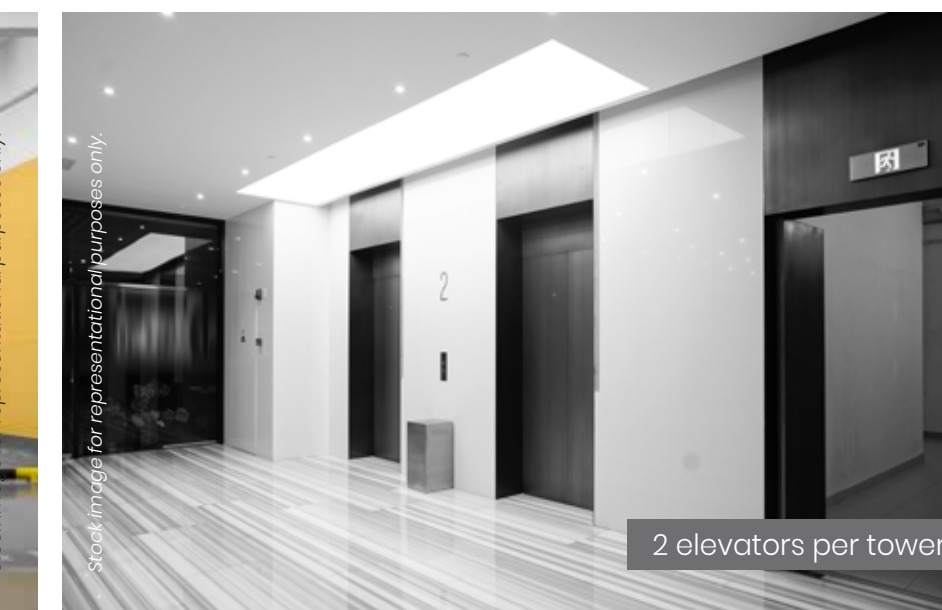
Power backup in common areas



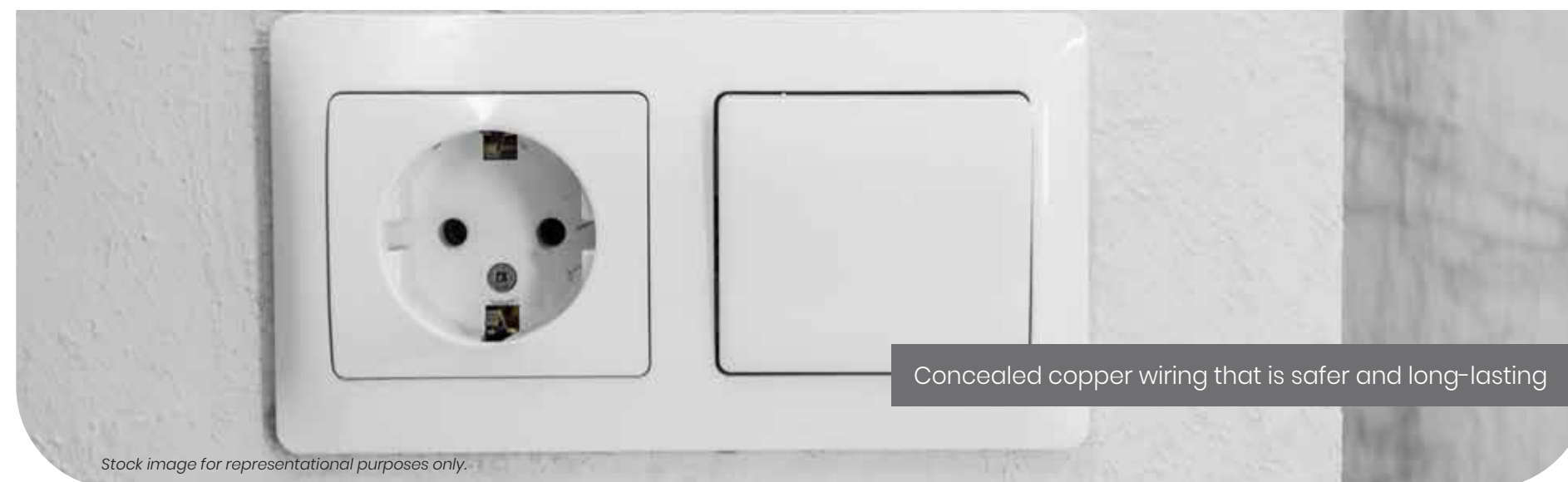
CCTV cameras at the entrance



Alloted car parking



2 elevators per tower



Concealed copper wiring that is safer and long-lasting

Stock image for representational purposes only.

Stock image for representational purposes only.

Stock image for representational purposes only.

Stock image for representational purposes only.

Stock image for representational purposes only.

at main gate only

**Choose a wholesome life
when you choose a home
at Mahindra World City.**



Mahindra World City

Welcome to the Sooper City, Mahindra World City, Chengalpattu. An integrated city, where world-class infrastructure thrives in the abundance of nature. Spread over 1500 acres, Mahindra World City is filled with open and green spaces.



City amidst nature



City with a thriving business district



Environment-friendly city



Fully integrated city



Low congestion city



City with homes for all



India's **1st** integrated green township



Spread across **1500** acres with **150** acres of greenery



1000 acres of reserve forest & **7** lakes



India's **3rd** IGBC platinum certified green township



1st integrated city in India to receive "**Zero Waste to Landfill**" certification



India's **1st** food-waste free City



3 sector-specific SEZ's, domestic tariff, residential, social/retail zones



Preferred destination for **65+** global corporates



1,00,000+ working population



City with **2900+** families



City with regular water supply



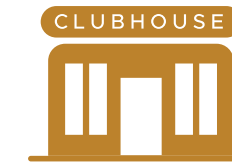
Low-density city with wide roads



On-site railway station



Hospital



Mahindra World City club



Hotels



Shopping centers



4th best city to live in*



Mahindra World School



Entertainment[^] and dining



Image for representational purpose only



*JLL Report, 21st August 2017. ^Proposed development.

Untold changes

Mahindra World City is truly a city in its own right, with everything you need available right at your doorstep.

The exclusive corporate zones at Mahindra World City are demarcated for use as office and manufacturing spaces. More opportunities for you to find work close to home with over 65 of the world's top conglomerates employing 1,00,000 direct & indirect employees.

-  Residential
-  Commercial / Industrial / Retail

-  Lakes
-  Reserved Forest

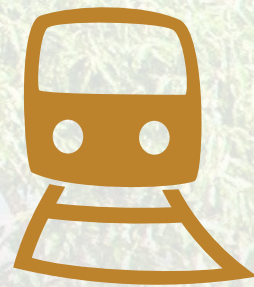


*Map not to scale; for representational purpose only.

Stay within reach of everything that matters

Situated in a convenient location, your home offers seamless connectivity that ensures you save time on your daily commute for things that truly matter.

- Proximity to Paranur railway station
- Proximity to National Highway (NH-32)
- Commute within MahindraWorld City on bio-gas fueled buses
- Easy access to convenience stores & proposed multiplex



Distance and timelines (shortest) are indicative and approximate subject to road and infrastructure facilities provided by the appropriate authorities.
Source: Google Maps. Travel time basis normal traffic conditions.



MIWC CLUB

At Mahindra World City, you never run out of things to do

Located within Mahindra World City, the MWC Club is a private retreat with ample amenities for all. Now, even 24 hours will be less to enjoy your day.

- Tennis court
- Squash court
- Badminton court
- Swimming pool
- Gymnasium
- Indoor games room for billiards, cards, table tennis & carrom
- Yoga deck
- Yoga deck
- Spa & Salon
- Reading lounge
- Sports bar
- Multicuisine restaurant
- Party lawn
- Guest rooms
- Kids play area
- Multipurpose hall



Convenience is a city at your doorstep

Cocooned in Mahindra World City, get access to a wide range of facilities. It is easy to walk wherever you need to go.

- Amelio Child Care Centre
- The Canopy Shopping Centre
- Entertainment Options
- Banks & ATMs
- School
- Hospital
- Fairfield by Marriott & Downtown Corporate Stays
- Convenience Stores
- Fuel Station



Discover a family of friends

With over 2500 families calling Mahindra World City their home, discover a community of inspiring and like-minded neighbours. Get to know your new family and lead a holistic lifestyle through various social and cultural events, sports and music festivals hosted by Mahindra World City.

- Annual Mahindra World City Marathon
- Tamil Nadu International Balloon Festival held at Mahindra World City for the first time in 2019
- Over 3 lakh saplings planted across 140 acres at Mahindra World City



Actual image of Mahindra World City dated Aug 2019.



Actual image of Mahindra World City dated Jan 2019.



Actual image of Mahindra World City dated Feb 2020.



Infosys

Experience a work-life balance most can only dream of!

With the infrastructure of an integrated city and co-located with many international companies, Mahindra World City offers the work-life balance you've always desired.

- The city is home to more than 65 blue-chip companies belonging to various sectors like Automotive, Auto Components, Healthcare, IT, Engineering, Packaging and many more
- With dedicated economic zones, industrial centres and corporate offices, all located within the confines of Mahindra World City, your office is but a walk away



Kolavai Lake



Artist's impression, for representational purposes only.

Master plan

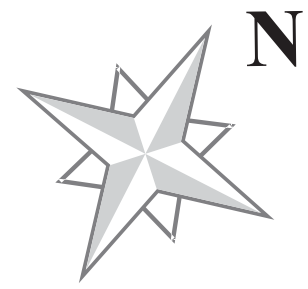
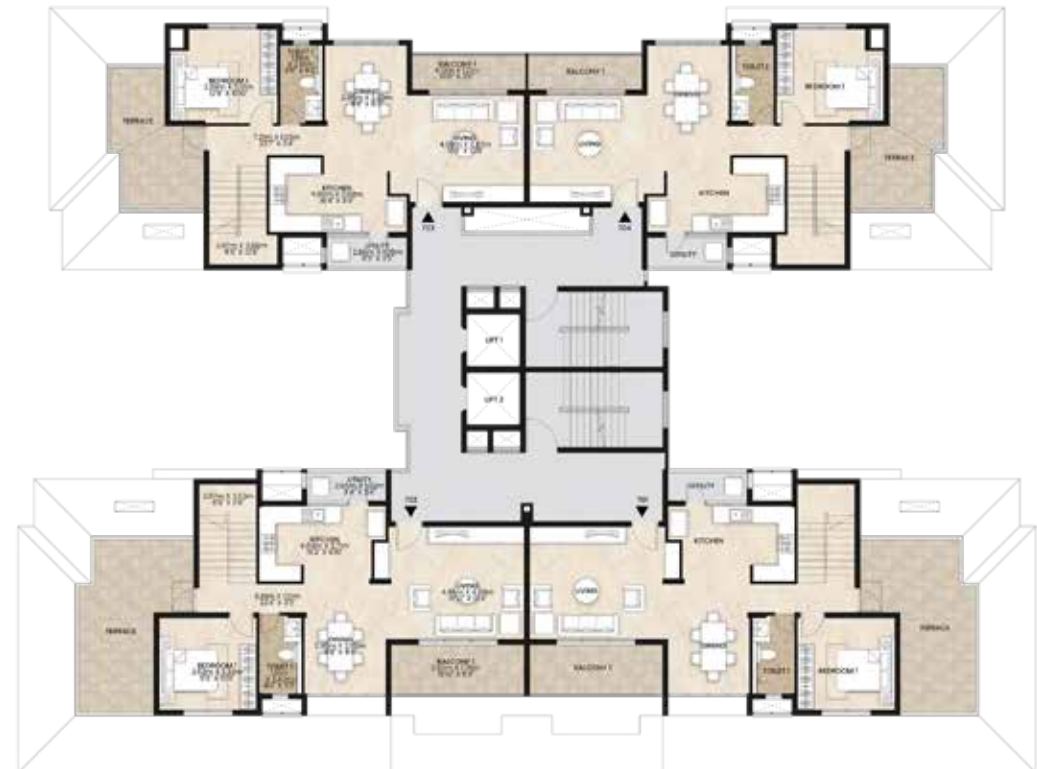
LEGEND:

- Entry/Exit
- Central Park
- Shaded Walkways
- Seating Areas
- Half-basketball Court
- Children's Play Area
- Open Amphitheatre
- Clubhouse
 - Multipurpose Hall
 - Aerobics Room
 - Gymnasium
 - Kid's Play Room
 - Indoor Games Room
- Swimming Pool & Kid's Pool
- Outdoor Tennis Court
- Outdoor Badminton Court
- Garden
- Services

TOWER C7 TYPICAL PLAN

TOWER C7 DUPLEX LOWER LEVEL PLAN

TOWER C7 DUPLEX UPPER LEVEL PLAN



Unit Plans - C7

C7 - 3 BHK



3 BHK		
Area	Sq.Mts	Sq.Ft
RERA Carpet	97.88	1053.5
Balcony Area	10.07	108.3
Utility Area	3.02	32.51

C7 - 3.5 BHK



3.5 BHK		
Area	Sq.Mts	Sq.Ft
RERA Carpet	125.1	1346.5
Balcony Area	9.33	100.4
Utility Area	2.86	30.7

Unit Plans - C7

C7 - 4 BHK DUPLEX (TYPE 1)

LOWER LEVEL



UPPER LEVEL



4 BHK Duplex (Type 1)

Area	Sq.Mts	Sq.Ft
RERA Carpet	149.59	1610.19
Balcony Area	19.92	214.42
Utility Area	2.91	31.32

Unit Plans - C7

C7 - 4 BHK DUPLEX (TYPE 2)

LOWER LEVEL



UPPER LEVEL



4 BHK Duplex (Type 2)

Area	Sq.Mts	Sq.Ft
RERA Carpet	148.25	1595.7
Balcony Area	11.83	127.3
Utility Area	3.02	32.51

TOWER C8 TYPICAL PLAN



TOWER C8 DUPLEX LOWER LEVEL PLAN



TOWER C8 DUPLEX UPPER LEVEL PLAN



Unit Plans - C8

C8 - 3 BHK



3 BHK		
Area	Sq.Mts	Sq.Ft
RERA Carpet	97.88	1053.5
Balcony Area	10.07	108.3
Utility Area	3.02	32.51

C8 - 3.5 BHK (TYPE 1)



3.5 BHK (TYPE 1)		
Area	Sq.Mts	Sq.Ft
RERA Carpet	125.1	1346.5
Balcony Area	9.33	100.43
Utility Area	2.86	30.79

C8 - 3.5 BHK (TYPE 2)



3.5 BHK (TYPE 2)		
Area	Sq.Mts	Sq.Ft
RERA Carpet	125.10	1346.58
Balcony Area	7.18	77.29
Utility Area	2.86	30.79

Unit Plans - C8

C8 - 4 BHK DUPLEX (TYPE 1)

LOWER LEVEL



UPPER LEVEL



4 BHK DUPLEX (TYPE 1)

Area	Sq.Mts	Sq.Ft
RERA Carpet	149.59	1610.1
Balcony Area	19.92	214.4
Utility Area	2.91	31.3

Unit Plans - C8

C8 - 4 BHK DUPLEX (TYPE 2)

LOWER LEVEL



UPPER LEVEL



4 BHK DUPLEX (TYPE 2)

Area	Sq.Mts	Sq.Ft
RERA Carpet	148.25	1595.76
Balcony Area	11.83	127.34
Utility Area	3.02	32.51

Specifications

Floor finishes

Foyer, living, dining, passages
Master bedroom
Other bedrooms
Kitchen
Toilets & balcony
Utility
Stilt floor
Internal staircase in duplex

Vitrified tiles
Vitrified tiles
Vitrified tiles
Matt finish vitrified tiles
Ceramic tiles
Ceramic tiles
Cement flooring
Granite slab / Step tiles

Wall finishes

Internal walls
Toilet dado
External walls

Acrylic emulsion paint
Ceramic tiles upto 7' 0" height
Exterior emulsion paint

Kitchen

Granite worktop - RCC slab
Dado above worktop 2' 0" high
Stainless steel sink with single bowl and single drain

Sanitaryware

Master bed toilet
Other bedroom toilets
Master toilet wash basin
Other bedroom toilet wash basins

Roca/ equivalent - wall mounted EWC with dual flush
Roca - wall mounted EWC with dual flush
Roca/ equivalent- counter top wash basin
Roca/ equivalent- under counter wash basin

Bath fittings

Grohe / equivalent fittings in all bathrooms

Door

Entrance door
External doors, bedroom doors
Toilets/utility

Windows

M & E works

Electrical wiring & switches

Power back up

Railing works

Balcony
Internal staircase in duplex

Other amenities

Ground floor lift lobby

Other lift lobbies

Corridors

Common staircases

Others

Lift

Laminate wooden flush door
Flush door with paint finish/laminated flush door
Flush door with paint finish/laminated flush door

UPVC windows - operable (without grills)

Concealed wiring with modular switches
3 phase electric supply

3 BR / 3BR+ upto 1 KW (single phase)
Duplex upto 3KW (single phase)

MS railing enamel painted
SS railing

Provision for water purifier and exhaust fan in kitchen
Provision for geyser and exhaust fan in toilets

Granite flooring

Matte finish ceramic tiles

Matte finish ceramic tiles

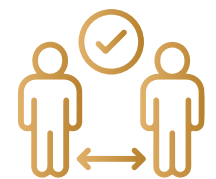
Antiskid Ceramic Tile & MS railing with enamel paint finish

Underslung with false ceiling

SS finish

Sustainable designs *with a touch of luxury*

Take a breath of fresh air at Codename AquaVista, which is surrounded by everything green. Attuning its practices with sustainable urbanisation, Mahindra World City, Chennai nurtures mother nature and creates an atmosphere of environmental, economic, and social stability. Being a pre-certified IGBC Gold certified green development, MWC is committed to conserve the environment. Make the transition to responsible living with Codename AquaVista.



Accessibility

- Basic amenities within a 2 km radius lead to fuel-saving and reduced CO2 emission

Offering a healthy lifestyle.



Life cycle cost

- Save up to 20% on electricity bills using energy-efficient windows, walls, roofs with high SRI* paint, window shading, adequate daylighting, and efficient lights & equipment
- Enhanced daylighting for more than 95% of regularly occupied living spaces
- Save up to 30% on water bills using low-flow fixtures and STP** treated water
- Optimized lighting for common areas such as lobbies, open parking, clubhouse, etc.



Green promoters

- More than 95% of rainwater is harvested through a rain water tank
- Parking to have electric charging facility
- Eco-friendly ACs which do not have ozone-depleting substances (that impact the ozone layer and shield the earth from UV[^] radiation)



For the differently-abled

- Hindrance-free movement, preferred parking, and dedicated restrooms



Healthy indoors

- Cross ventilation for more than 75% of habitable space
- Low VOC[#] paints for healthy indoors



Waste to wealth

- Use of treated organic waste as manure for landscaping
- Dry and wet waste segregation at common area

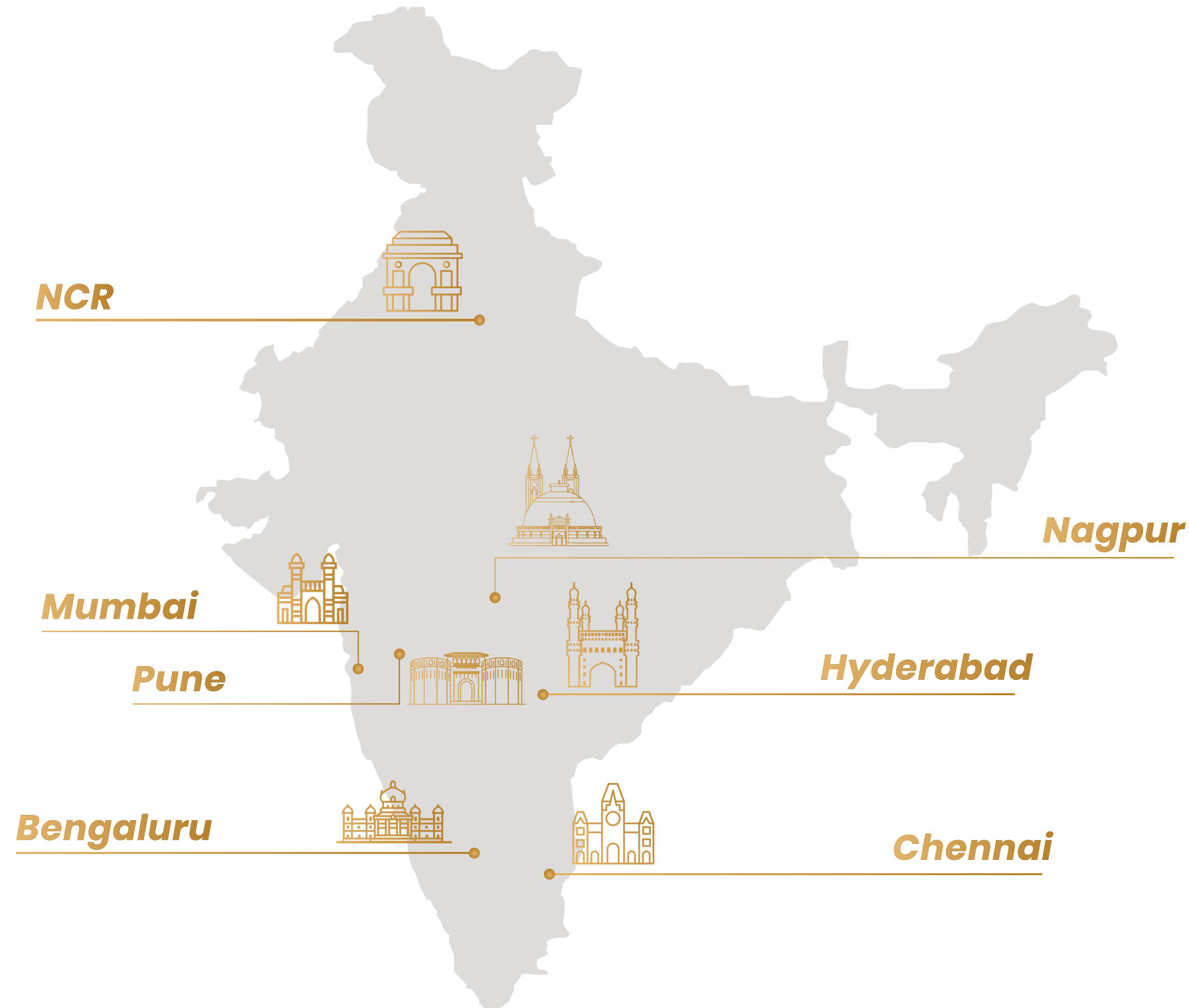
These are anticipated results based on the Final Pre-certification review issued by IGBC Green Homes (VI, 2009).

Actual results could differ from those expressed or implied.

*SRI - Solar Reflective Index | **Sewage Treatment Plant | #Volatile Organic Compounds | [^]Ultra Violet

Mahindra Lifespaces

Across the nation.



Our Development Footprint spans **27.4 million sq. ft. (2.5 million sq. m.)** of completed, ongoing and forthcoming residential projects across 7 Indian cities.

20.23 million sq. m. (5000 acres) of ongoing and forthcoming projects under development/management are present at its integrated developments/industrial clusters across 4 locations.

The Mahindra Legacy

Pioneer in Building smart sustainable cities



World's largest Tractor company by Volume



Leadership Position in India



Utility & electric vehicles



Information technology



Financial services



Vacation ownership

Strong Presence Across Verticals



Agri-business



Commercial vehicles



Partners



Logistics



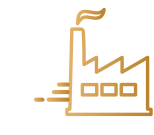
Real estate



Aerospace



Energy



Industrial equipment



Defence



Two wheelers



After market



Farm equipments

Over 260,000 Employees Across 100 Countries

11 Sectors
22 Industries
150+ Companies



Information as on Sep'21.



Stock image for representational purposes only.



mahindra Aqualily

at

mahindra World City

Sales Office:

The Canopy, 1st Floor, Block-A, Unit No. 2,
Mahindra World City, Chengalpattu - 603004.

Registered Office:

Mahindra World City Developers Limited.
ADMIN BLOCK, CENTRAL AVENUE, MAHINDRA WORLD CITY,
Kanchipuram, Tamil Nadu, 603004.

Disclaimer: Mahindra Aqualily is registered as "Aqualily phase 2C2" under TNRERA No: TN/01/Building/0174/2022 dated 20.05.2022 valid up to 31.12.2024 and the details are available at www.rera.tn.gov.in.

This Project is being developed by Mahindra World City Developers Limited in phases. This communication is purely conceptual and for representational purposes only. Any furniture, fixtures and white goods shown are not part of the offering and purely for showcasing possibilities. Distance and timelines (shortest) are indicative and approximate subject to road and infrastructure facilities provided by the appropriate authorities. All figures mentioned herein are based on the estimated calculations. Terms and Conditions apply. The mentioned price does not include stamp duty and registration fee.