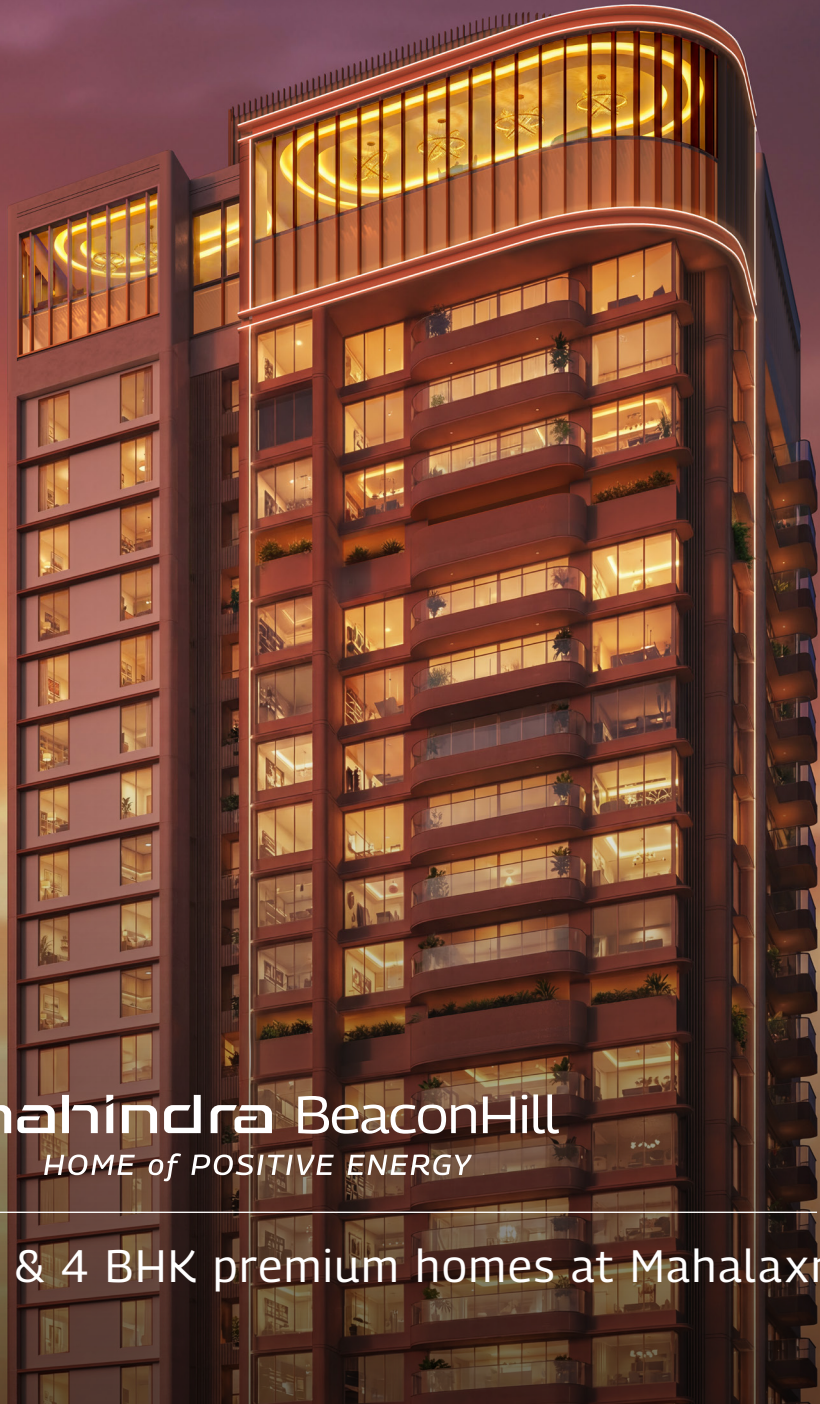




Positive Energy at its peak



ARTIST'S IMPRESSION FOR REPRESENTATIONAL PURPOSES ONLY

mahindra BeaconHill
HOME of POSITIVE ENERGY

Pre-launching 3 & 4 BHK premium homes at Mahalaxmi

SOCIAL INFRASTRUCTURE



RECREATION

1. Chowpatty Beach
2. Worli Sea Face
3. Mahalaxmi Race Course



LIFESTYLE

4. Phoenix Palladium
5. Kamala Mills Compound
6. Marine Drive



BUSINESS DISTRICTS

7. Kamala Mills Compound
8. One Indiabulls Centre



AIRPORT, RAILWAY, METRO

9. Mumbai Central Railway Station
10. Mahalaxmi Railway Station
11. International Airport



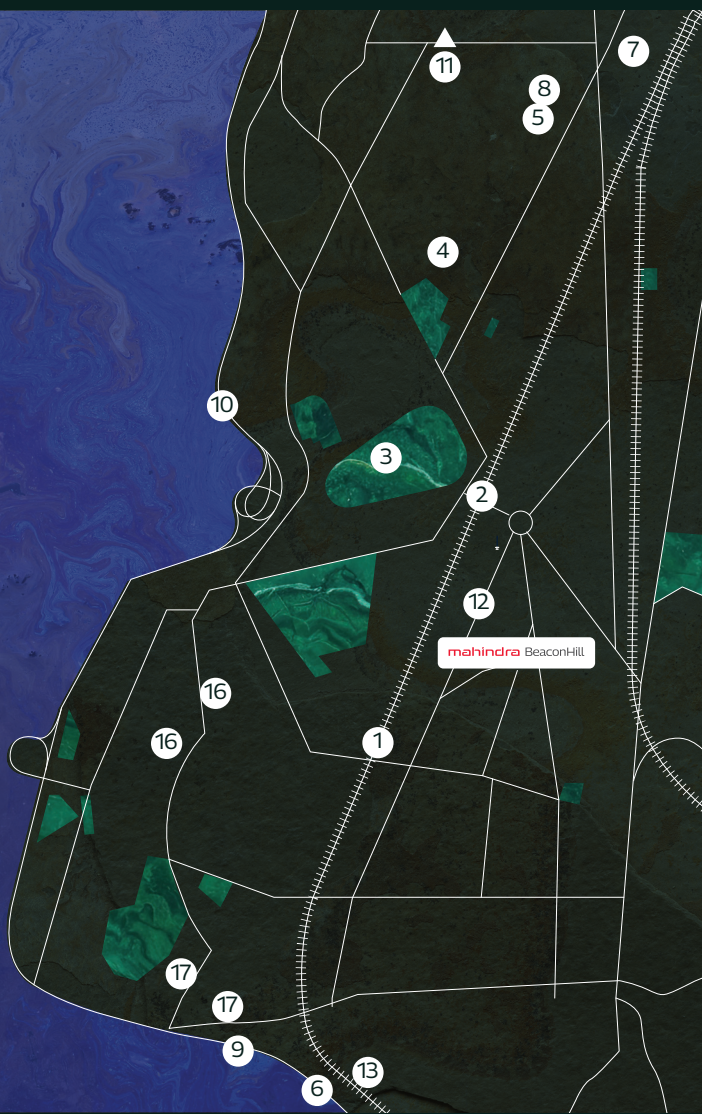
HOSPITALS

12. Jaslok Hospital and Research Centre
13. Saifee Hospital
14. Wockhardt Hospitals, Mumbai Central



EDUCATION INSTITUTES

15. Wilson College
16. Sophia College For Women
17. H. R. College Of Commerce & Economics



A positive future, perfectly connected

With upcoming infrastructure and seamless transit links on the horizon, at Mahindra Beaconhill, every corner of the city feels closer.

1. Elevated connector - Sewri to Worli
2. Metro corridor - Dr. E. Moses road
3. Walkway network - Mahalaxmi to Worli
4. Road overbridge - Byculla station
5. Elevated flyover - JJ flyover to Byculla
6. Road network integration - Jacob Circle



Positive Energy at the heart of the city

Mahindra BeaconHill, an exclusive tower in the centre of Mumbai with sweeping Arabian Sea views, offers a bespoke address for a select few.



135+ sq ft deck



Spacious walk-in wardrobes

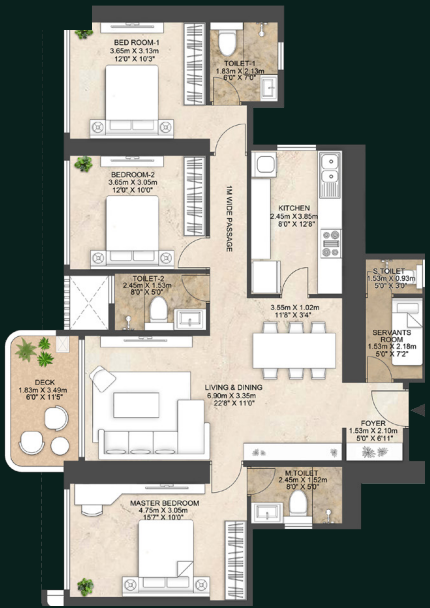


Abundant natural light

3 BHK LUXURY - 2



3 BHK LUXURY - 1



3 BHK EXTRA LUXURY - 1



3 BHK EXTRA LUXURY - 2



4 BHK LUXURY - 1



4 BHK LUXURY - 2



mahindra BeaconHill

HOME of POSITIVE ENERGY

Launching 3 & 4 BHK premium homes at Mahalaxmi.

Contact your relationship manager for more details



Project "Mahindra BeaconHill" is a society redevelopment project undertaken by Mahindra Lifespace Developers Limited. This Project is registered with MahaRERA: "Mahindra BeaconHill" bearing Registration no. PM1170002600357. The details of the said projects are available on <http://maharera.maharashtra.gov.in>. The information contained herein is indicative of the kind of development that is proposed. All specifications of the Project will be as per the agreement for sale to be executed between the parties. Buyer Discretion advised. T&C Apply.